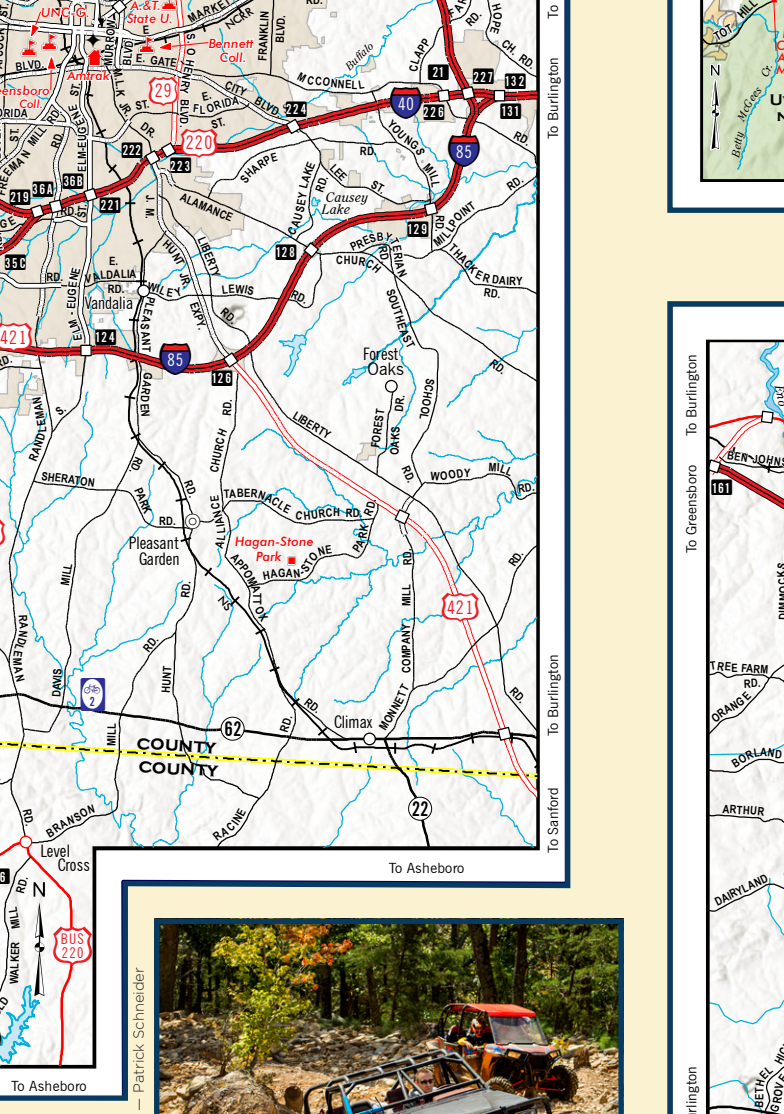
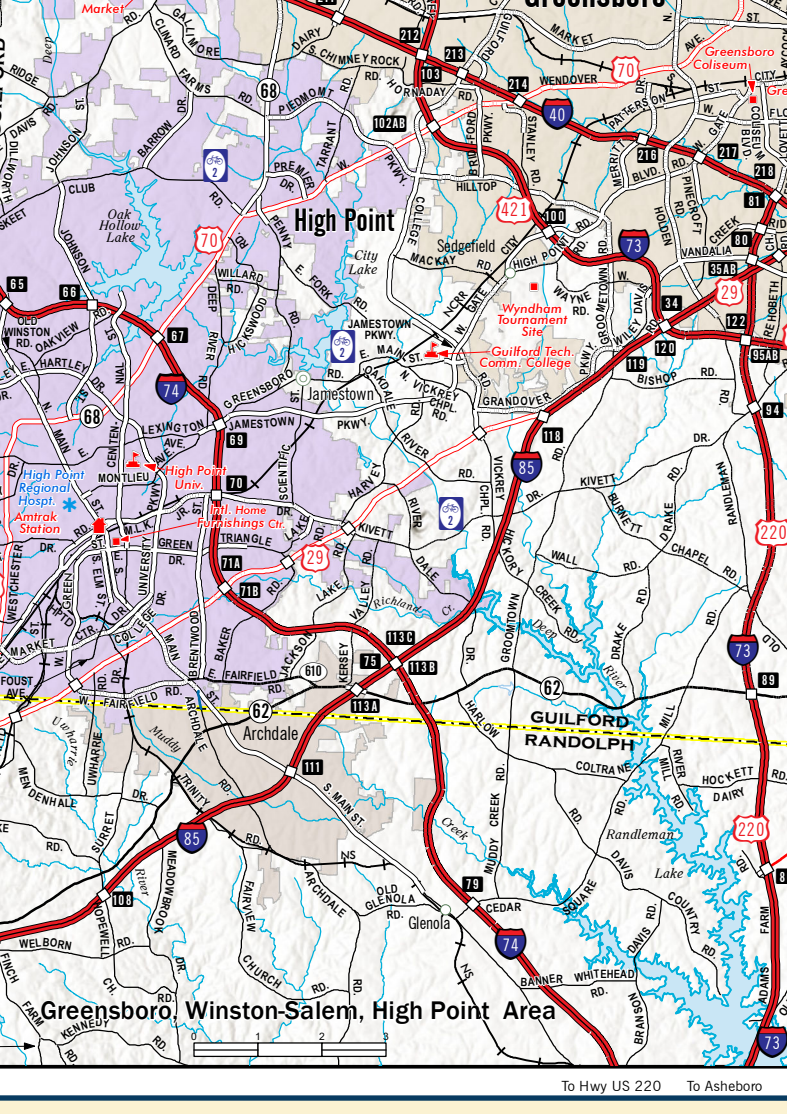
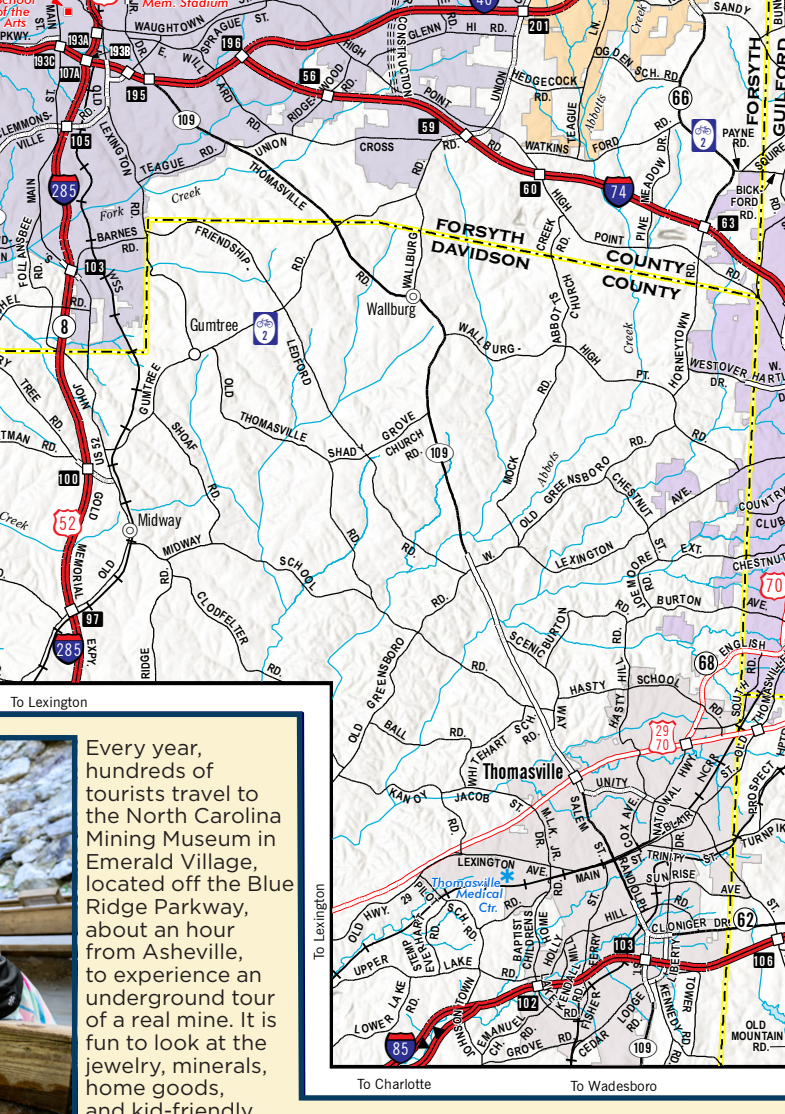
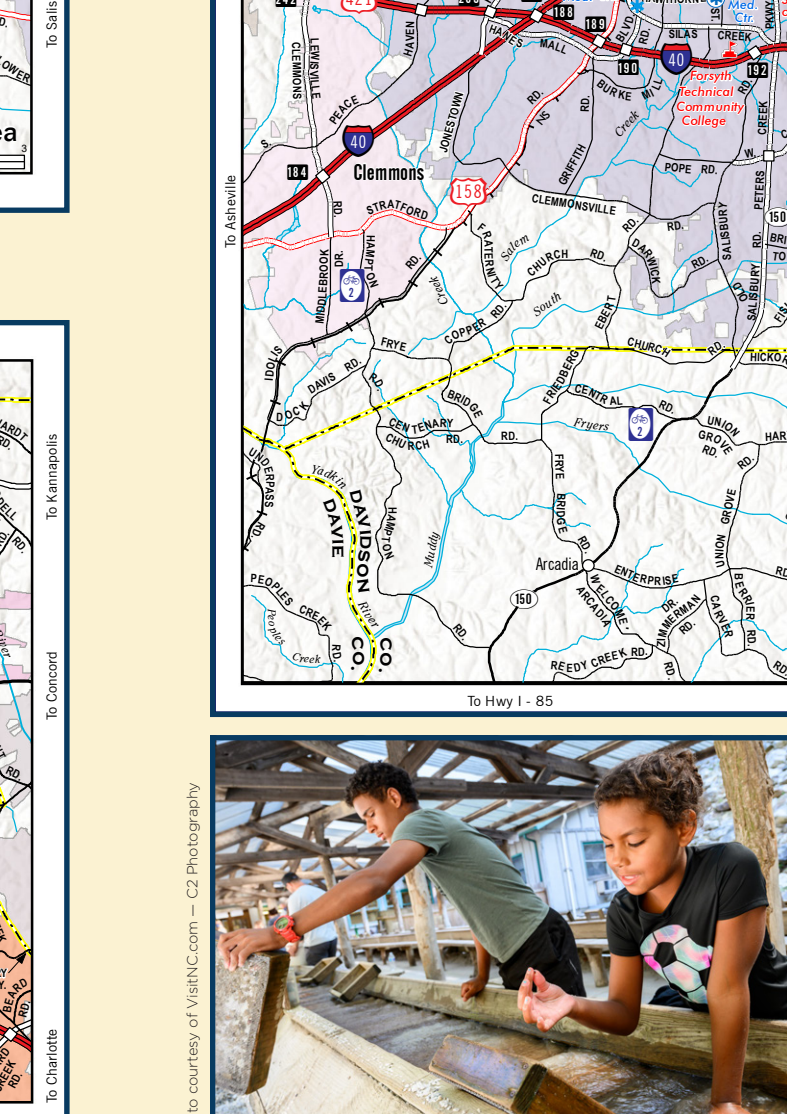
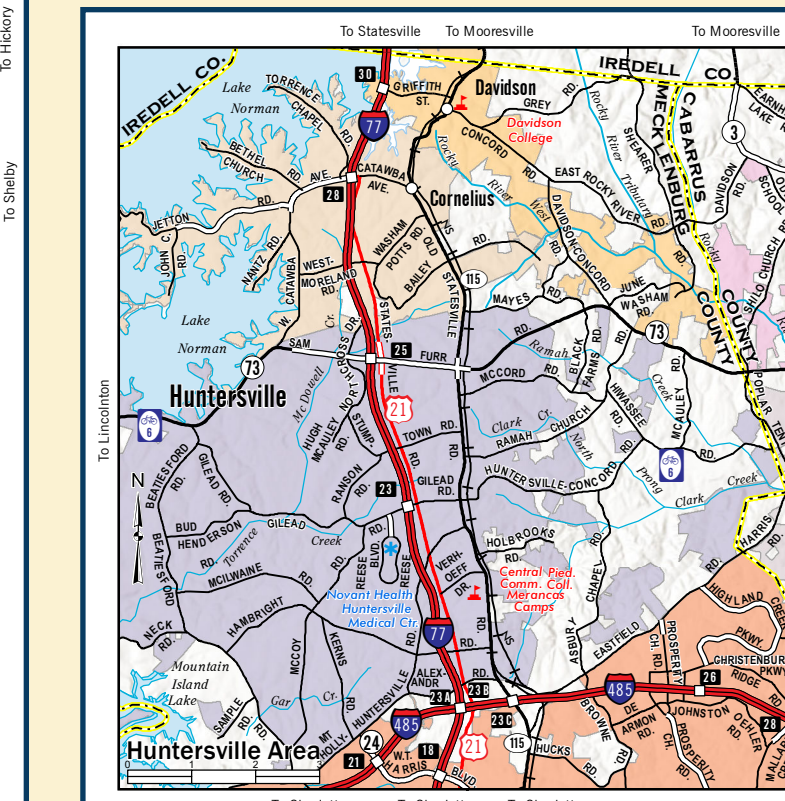
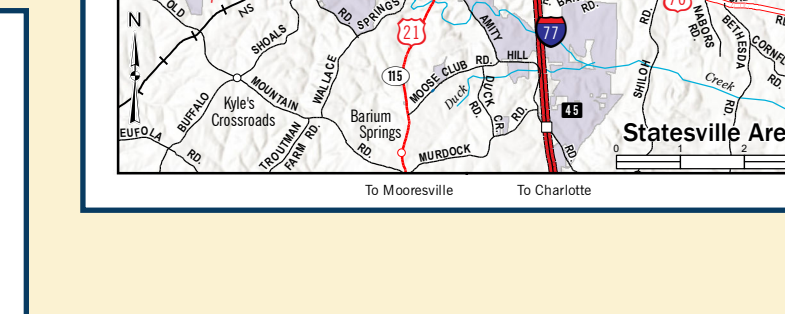
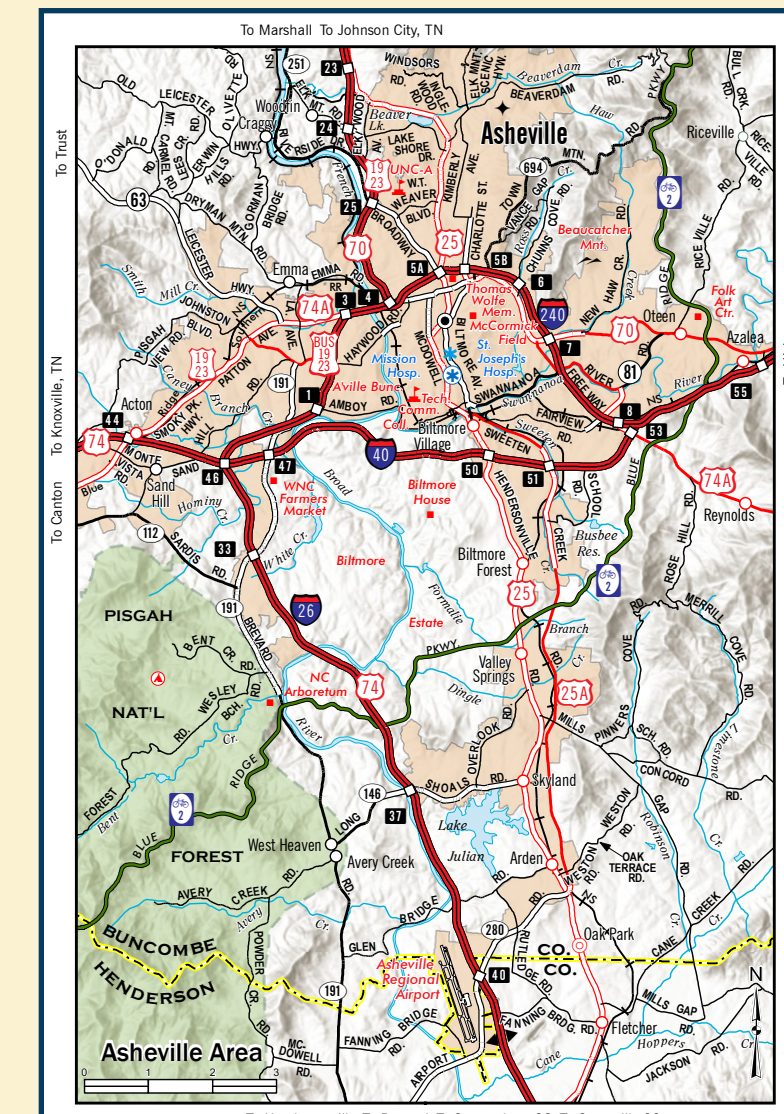




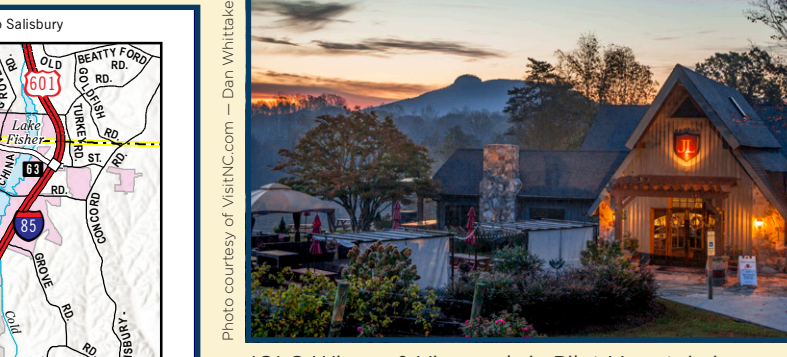
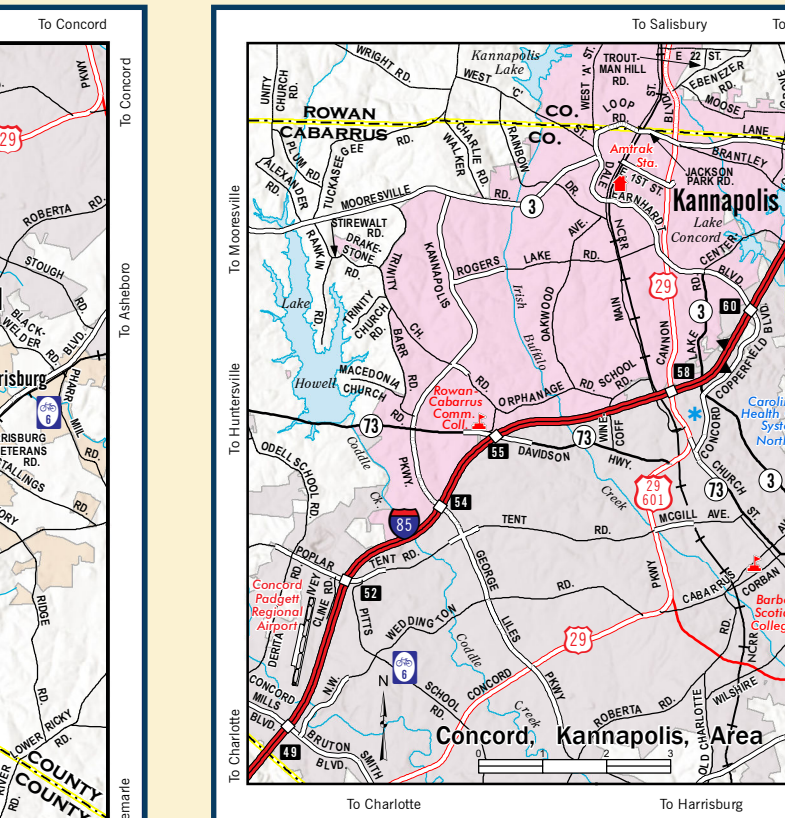
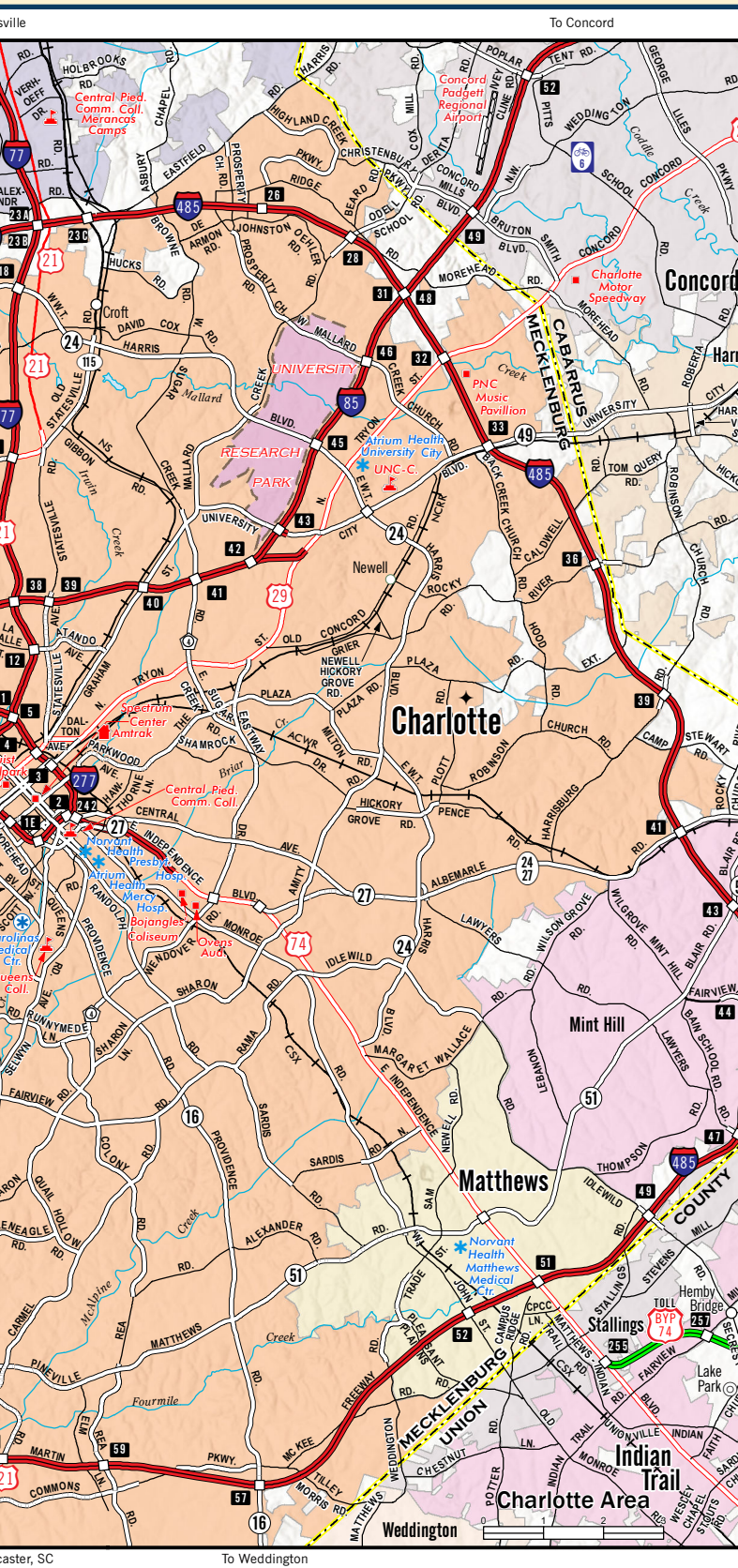
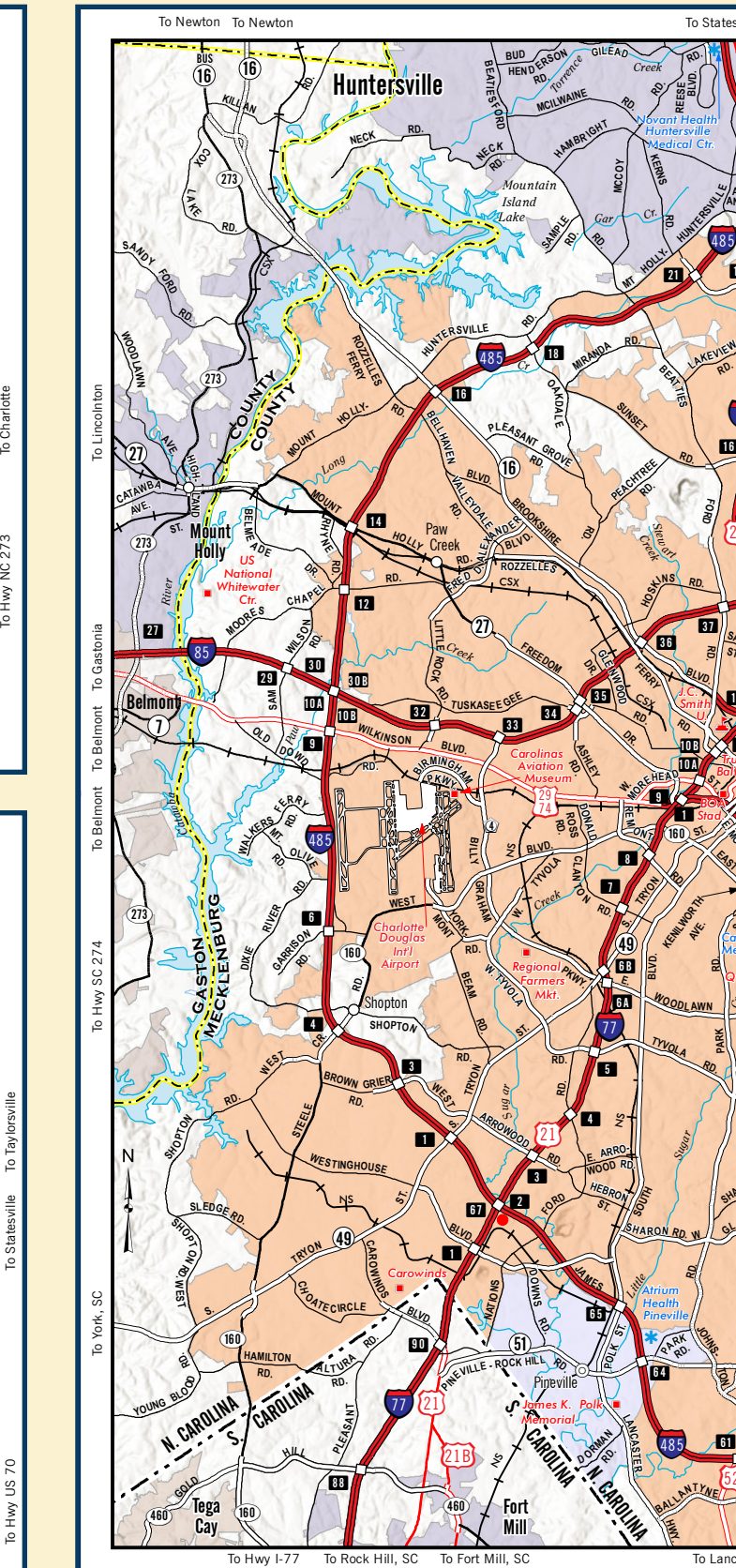
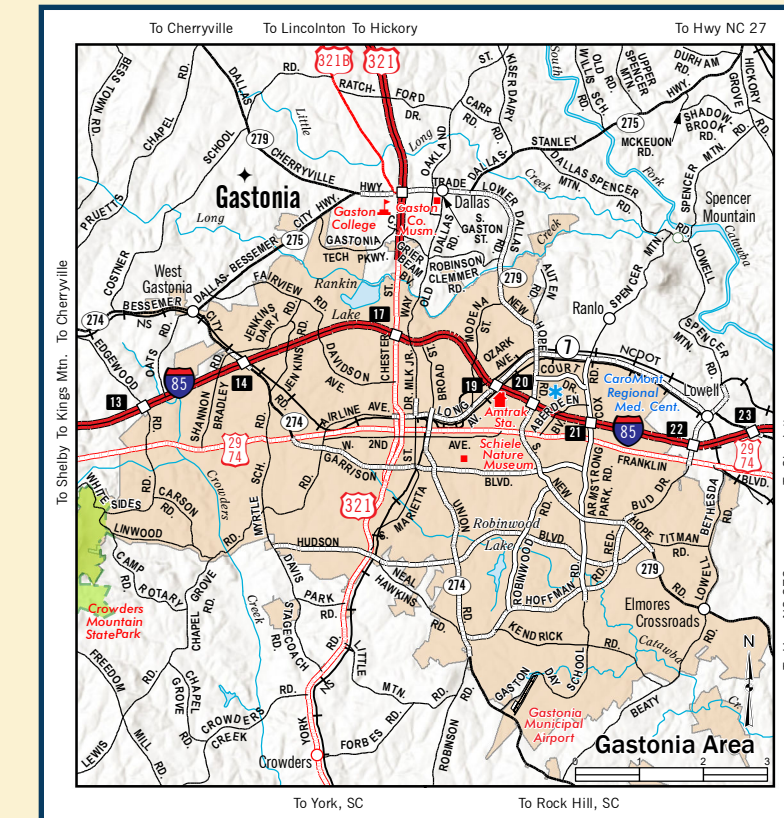
A group of friends appreciates the sunflowers at Canton's Ten Acre Garden. Ten Acre Garden is in Pigeon River in Haywood County; visit the farm with the family and take in the scenery. Fresh food is served, and the views are stunning.



Every year, hundreds of tourists travel to the North Carolina Mining Museum in Emerald Village located on the Blue Ridge Parkway, about an hour from Asheville, to participate in an underground tour of a real mine. It is fun to look at the jewelry, minerals, home goods, and kid-friendly activities.

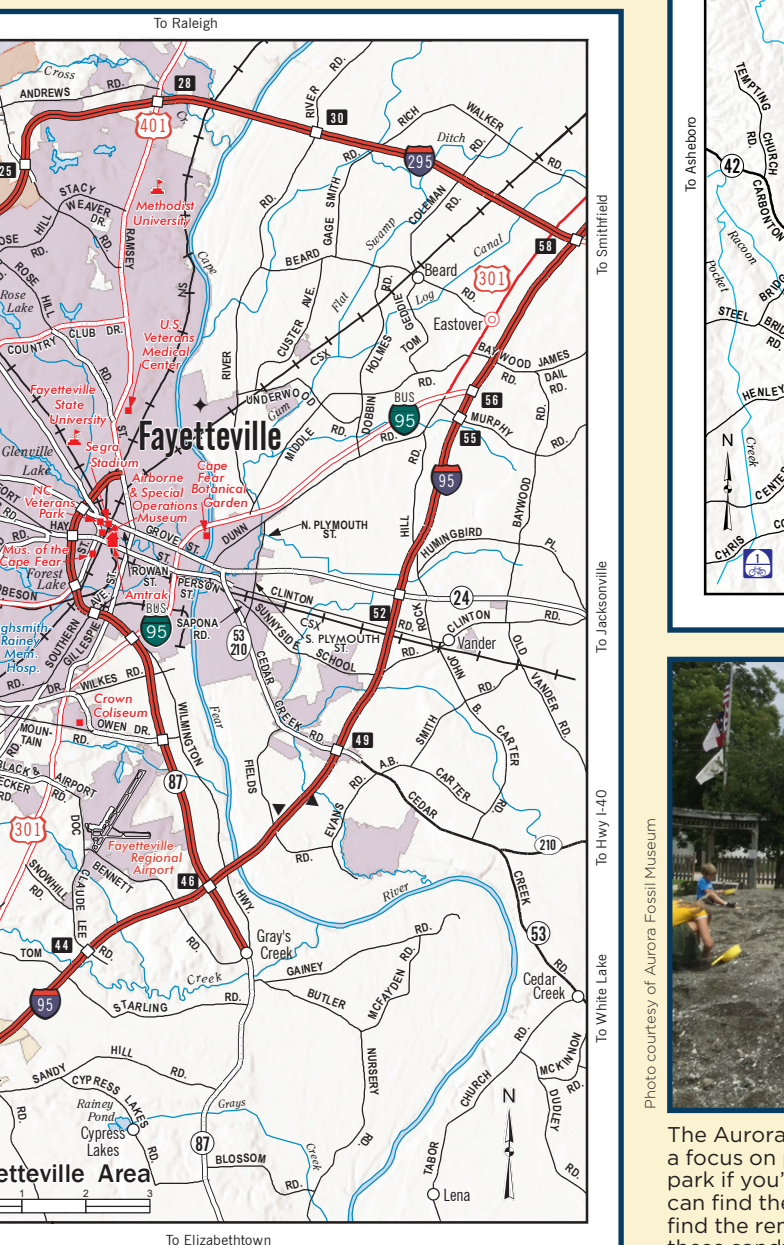
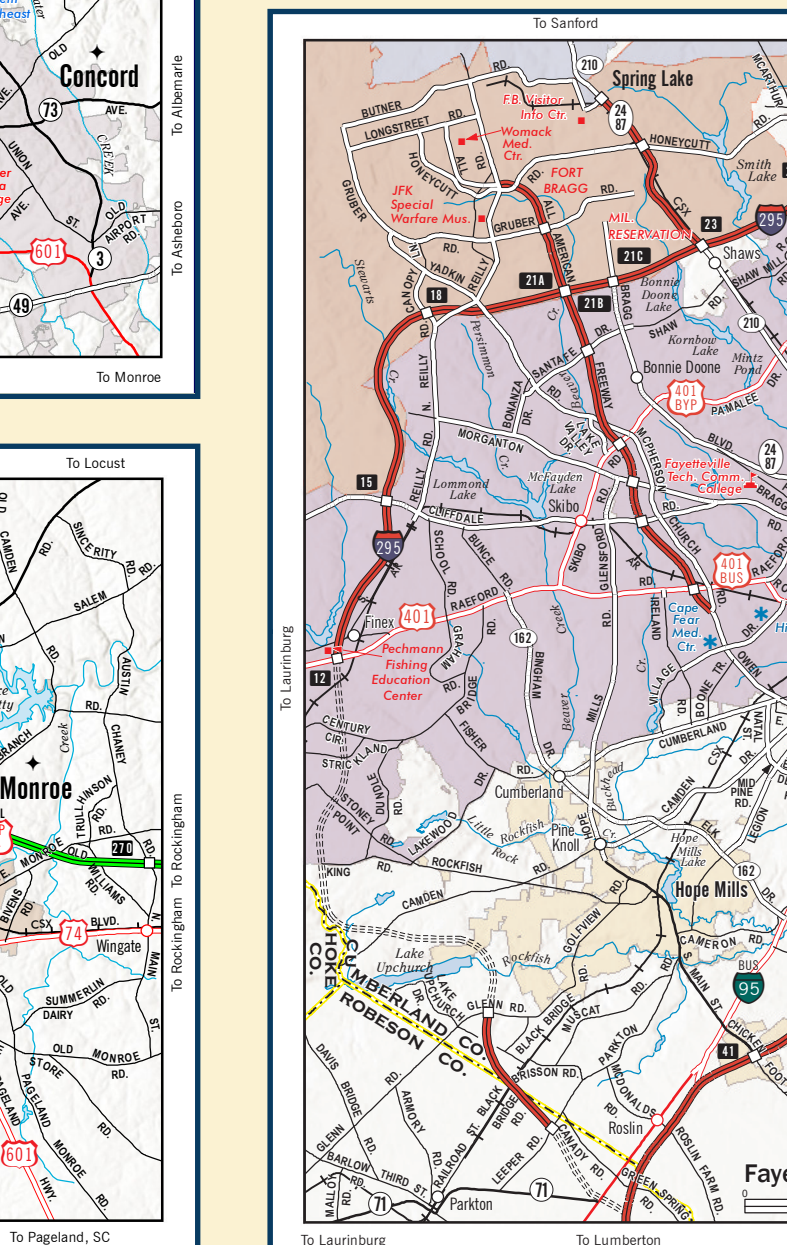


Airline Gardens in Wilmington covers more than 67 acres with more than a dozen gardens for all nature enthusiasts seeking a relaxing setting.

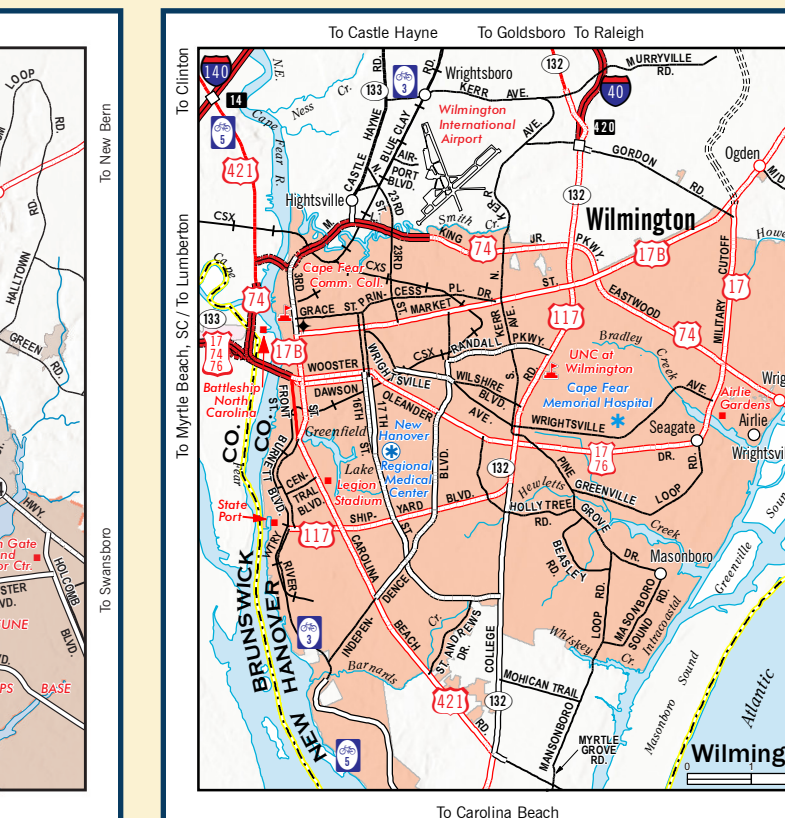
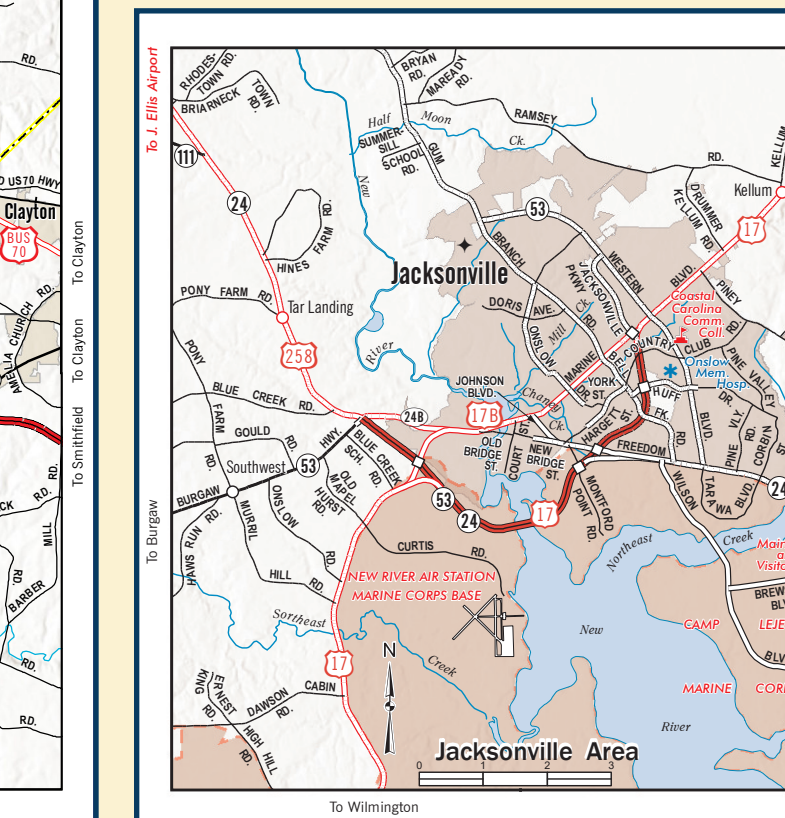
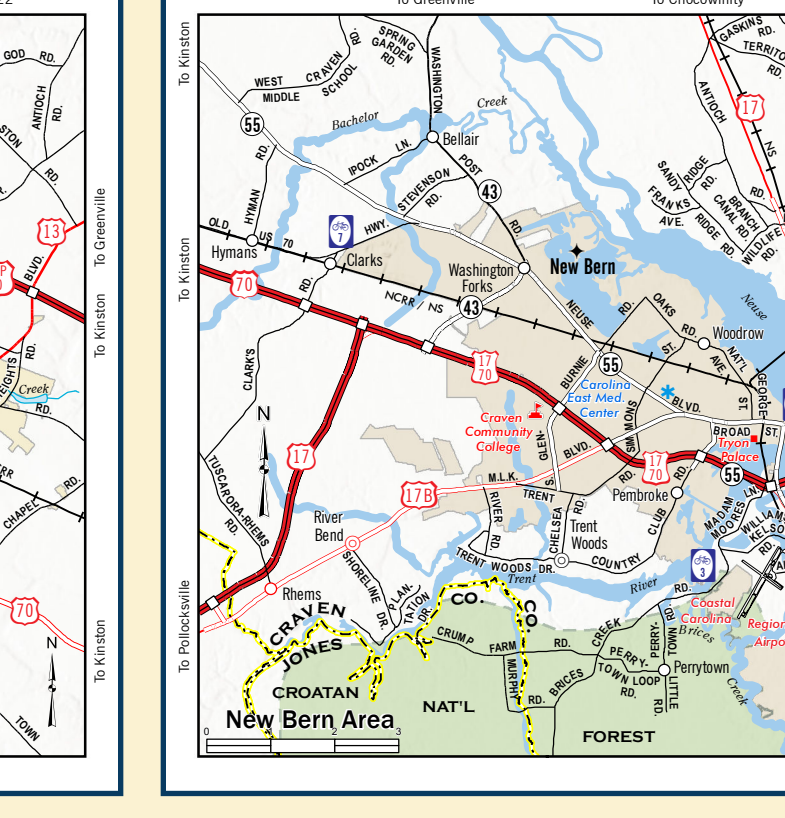
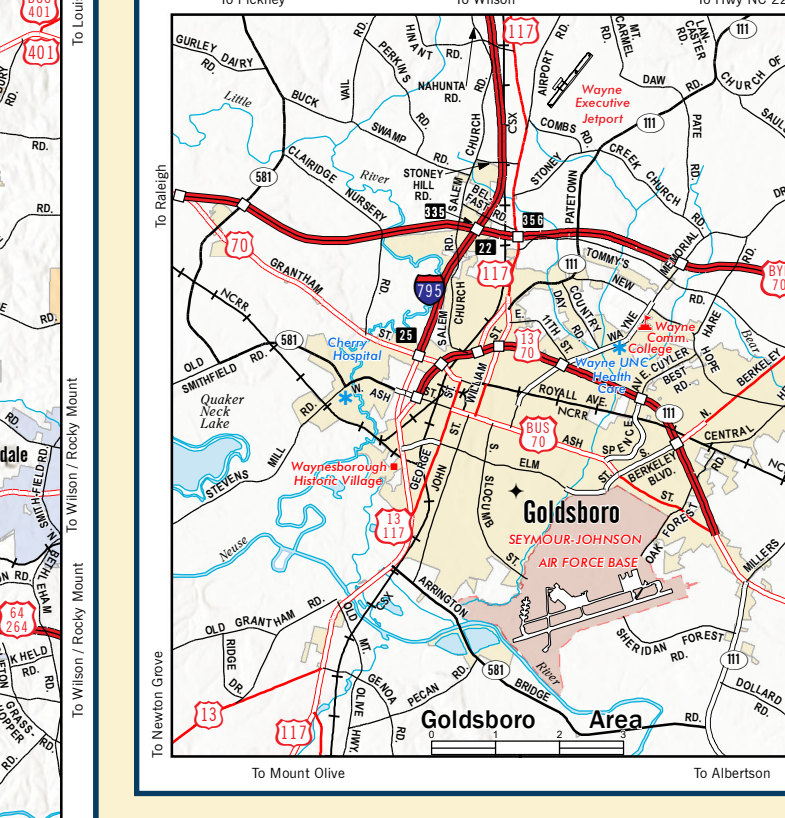
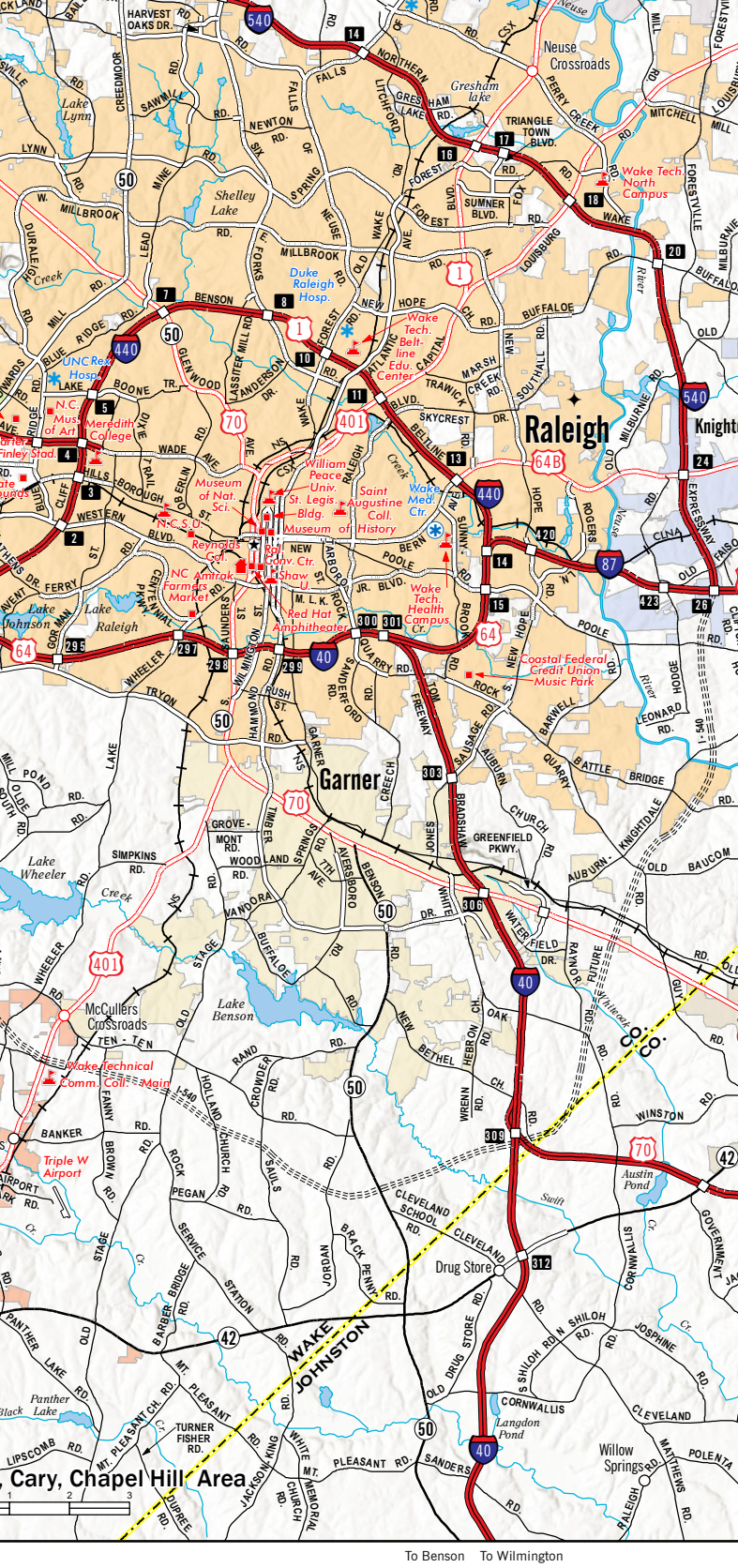
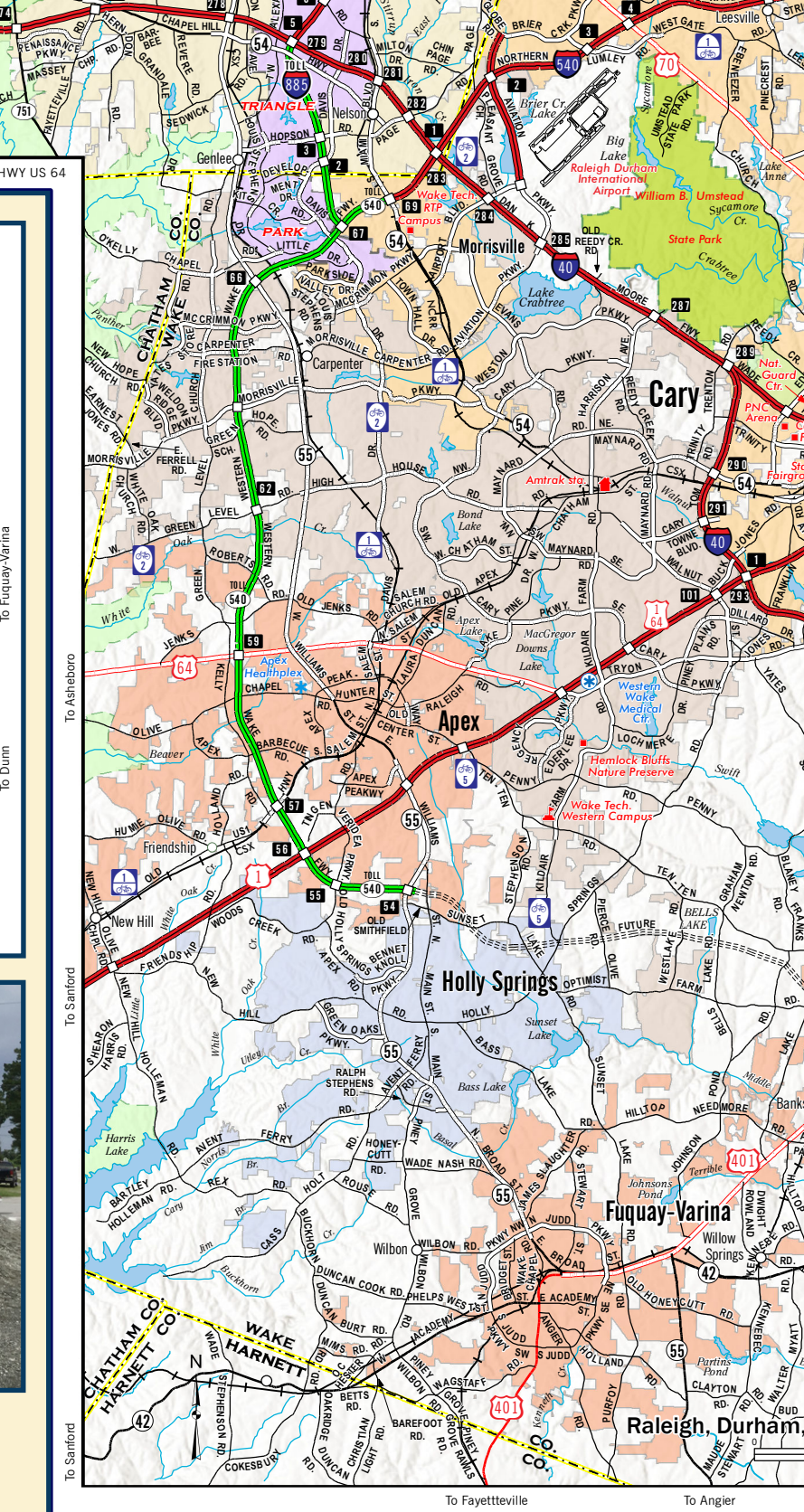
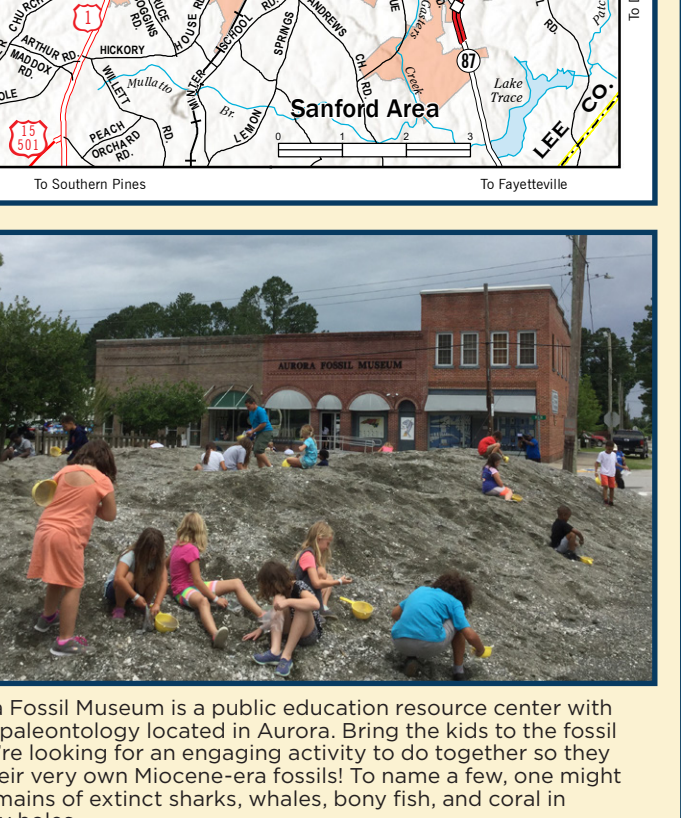
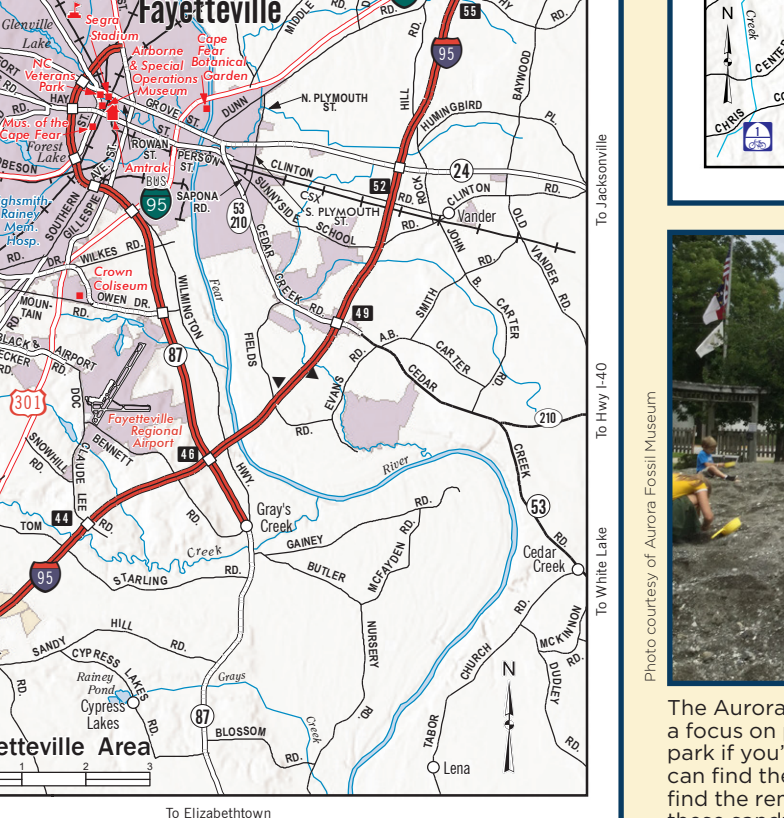
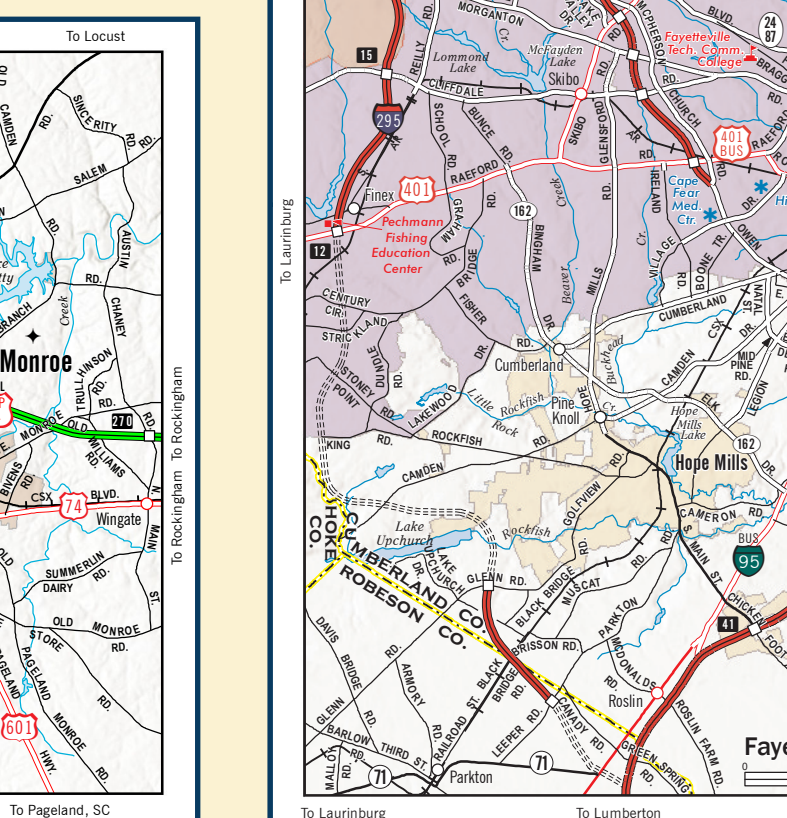
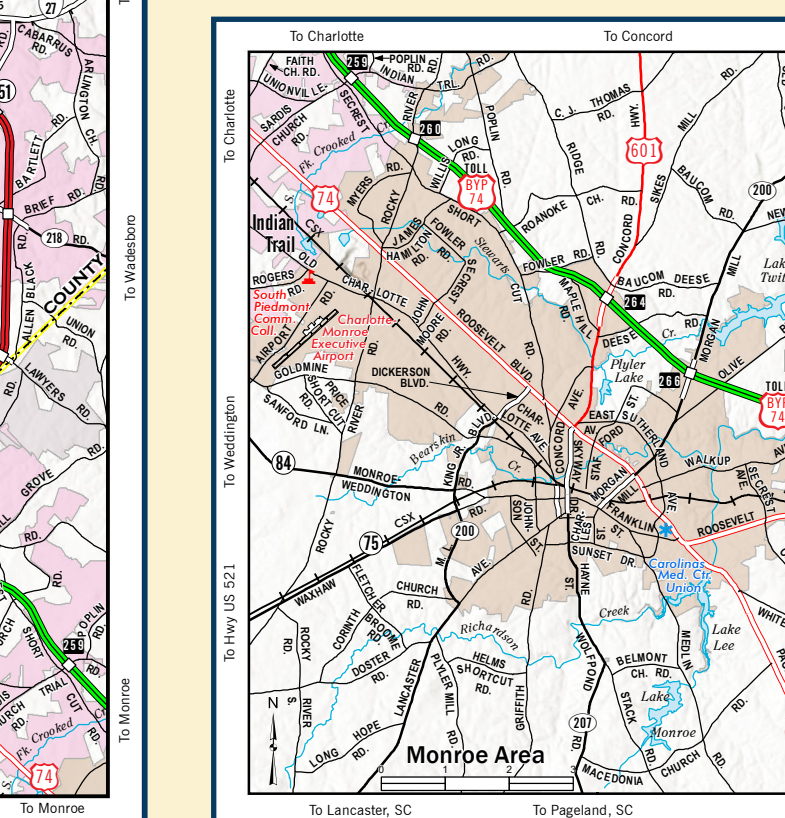
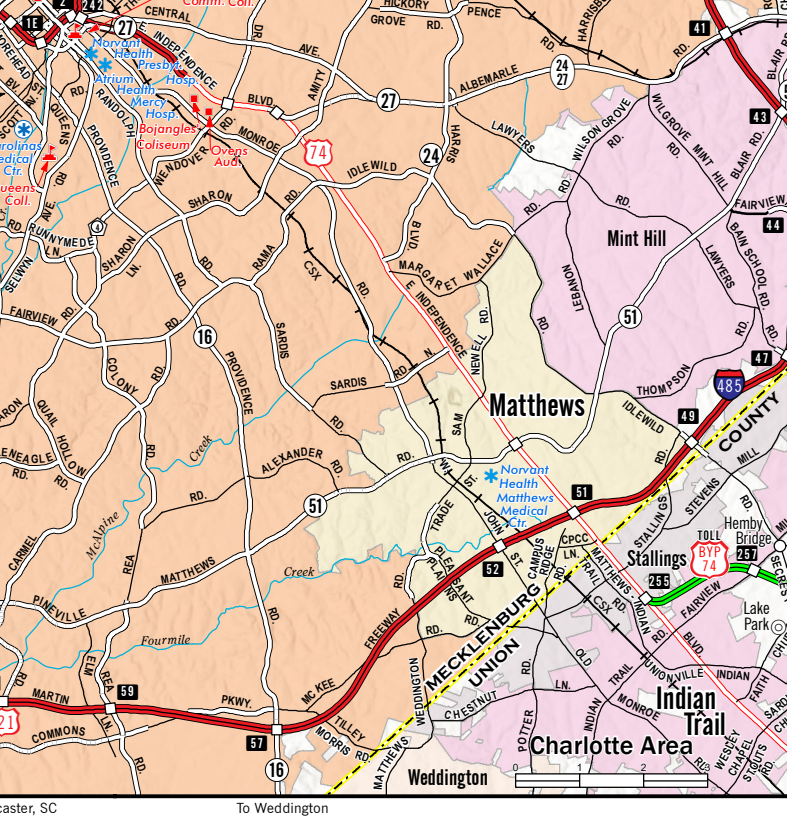
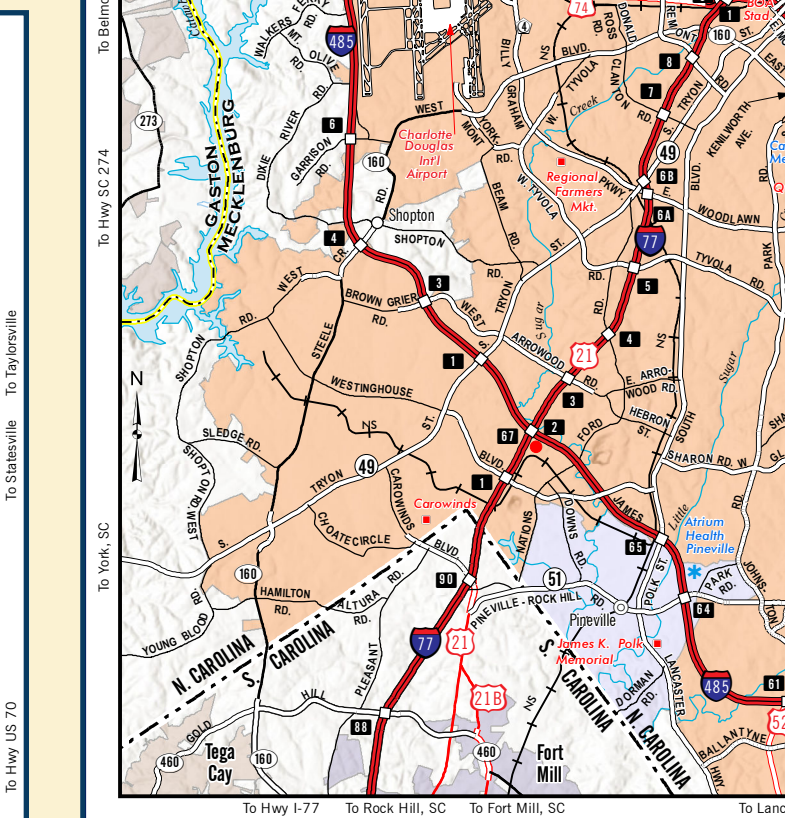
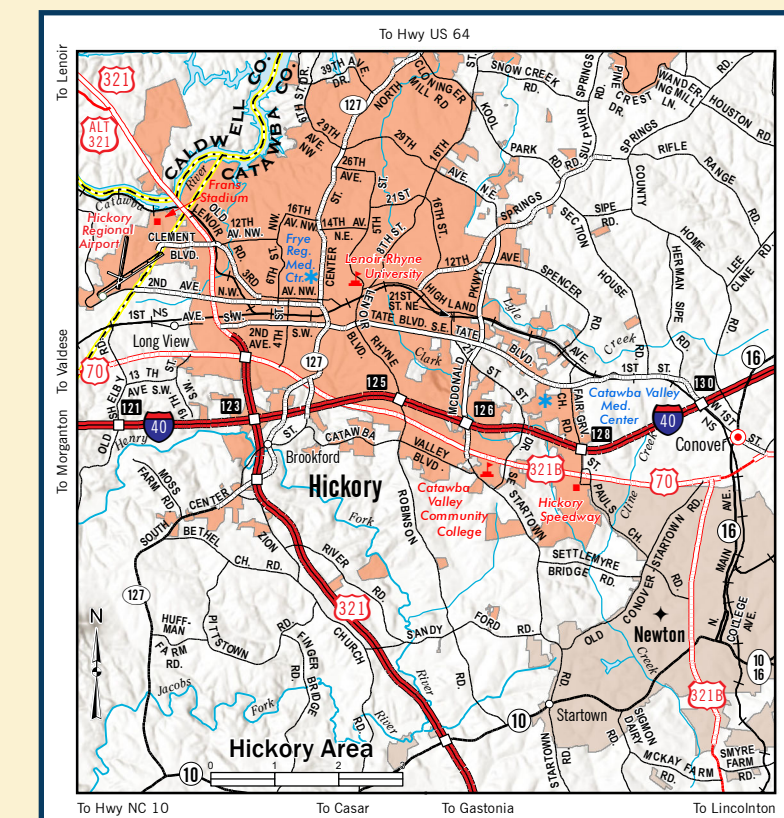
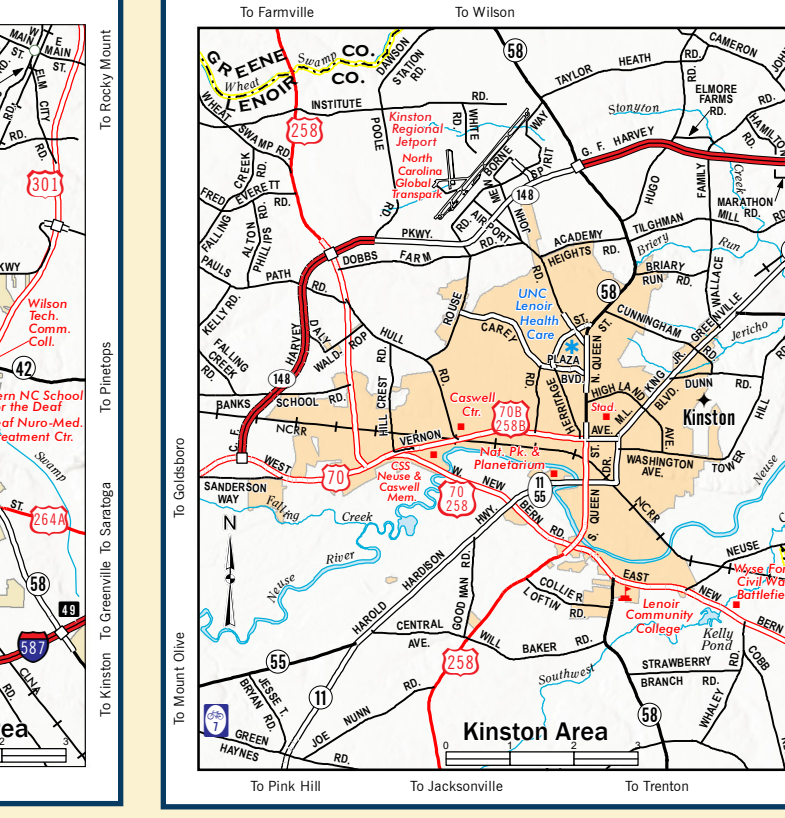
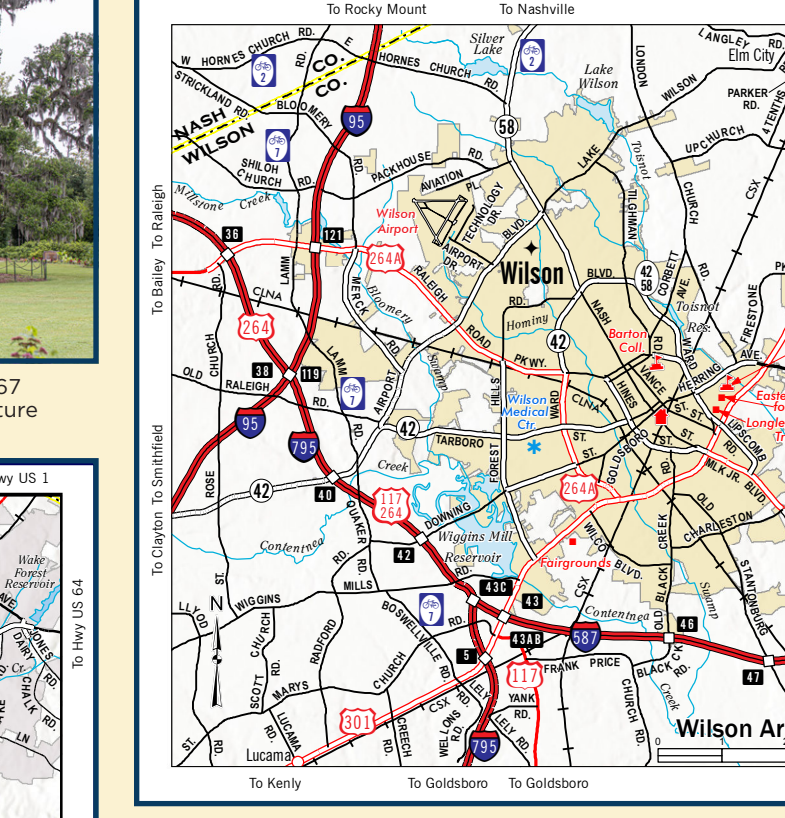
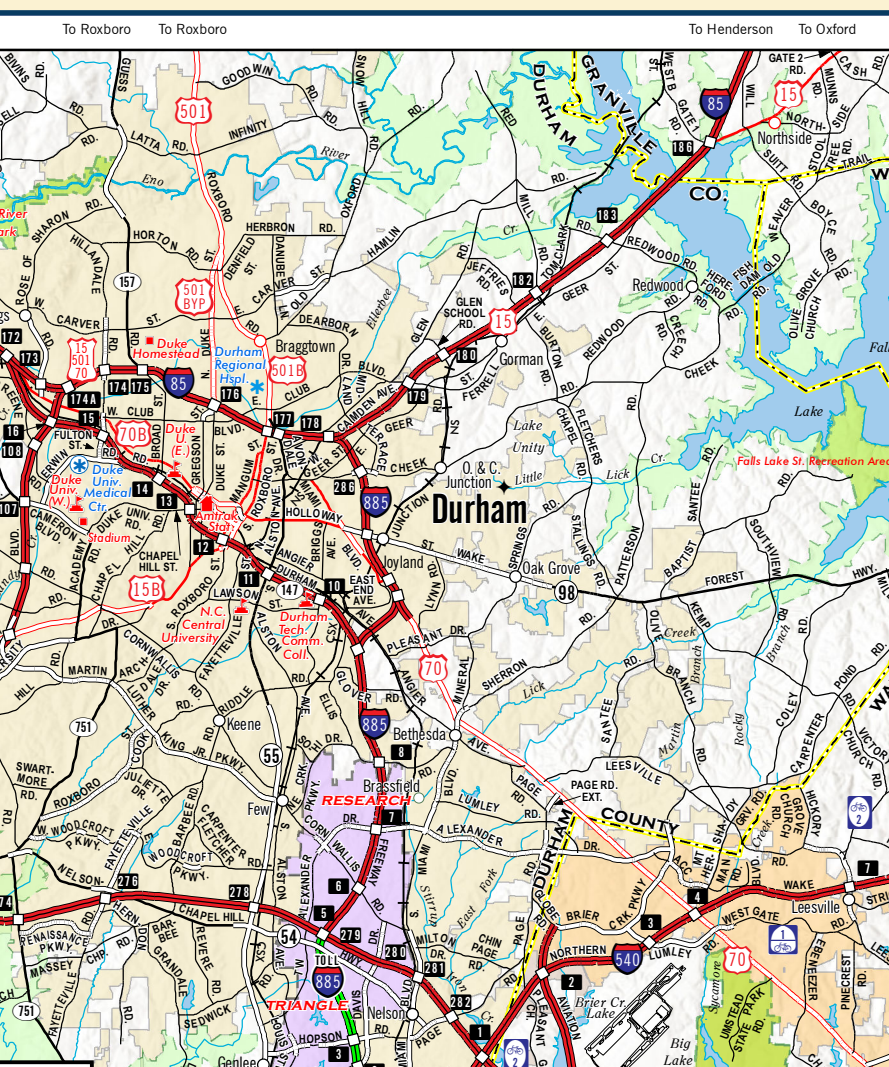
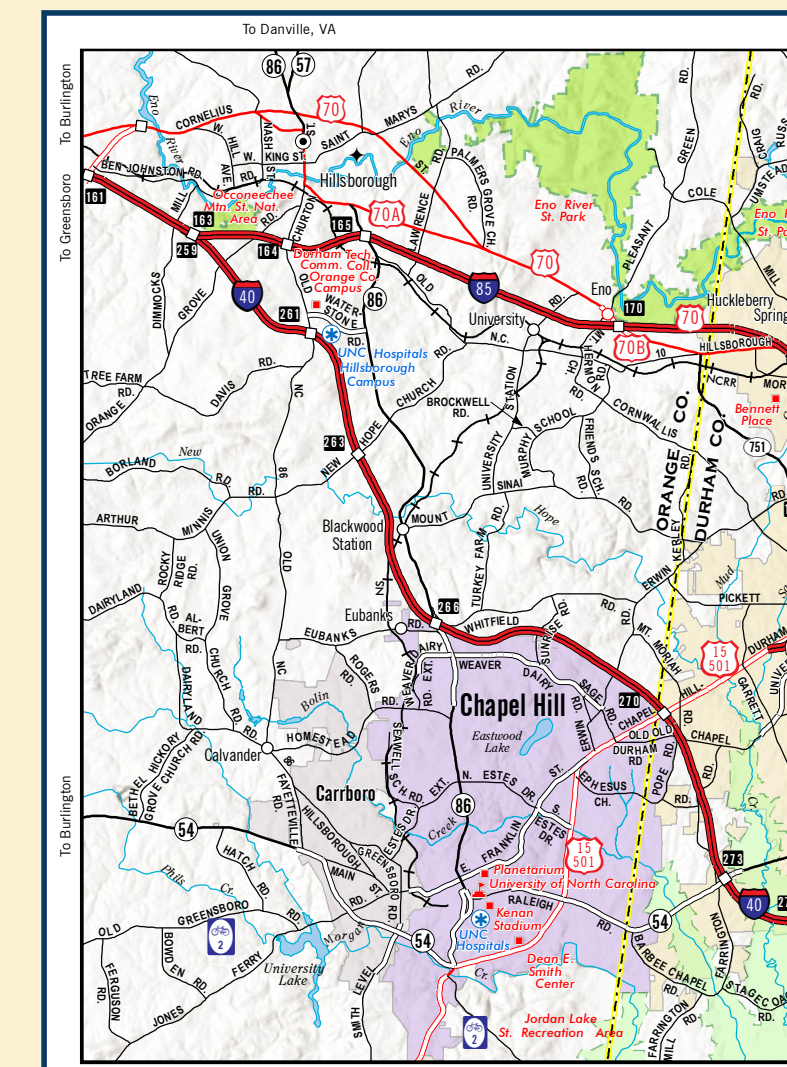
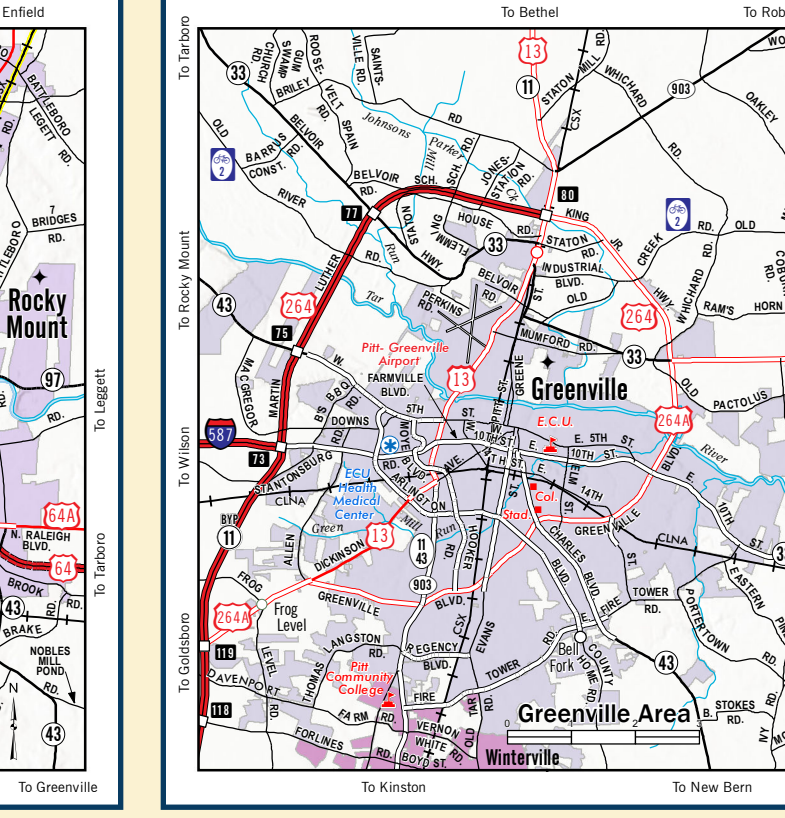
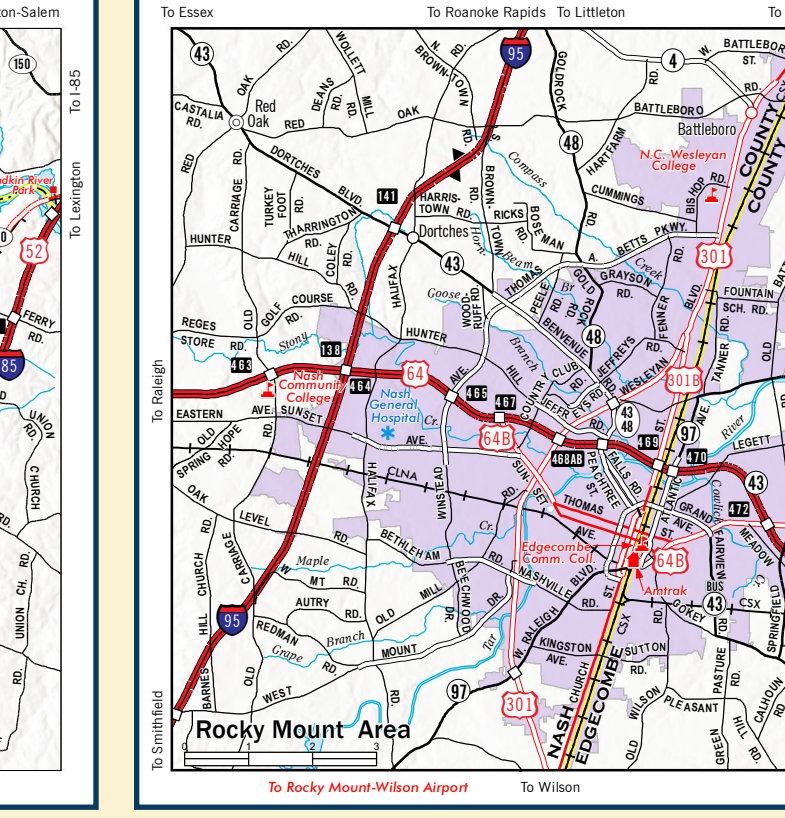
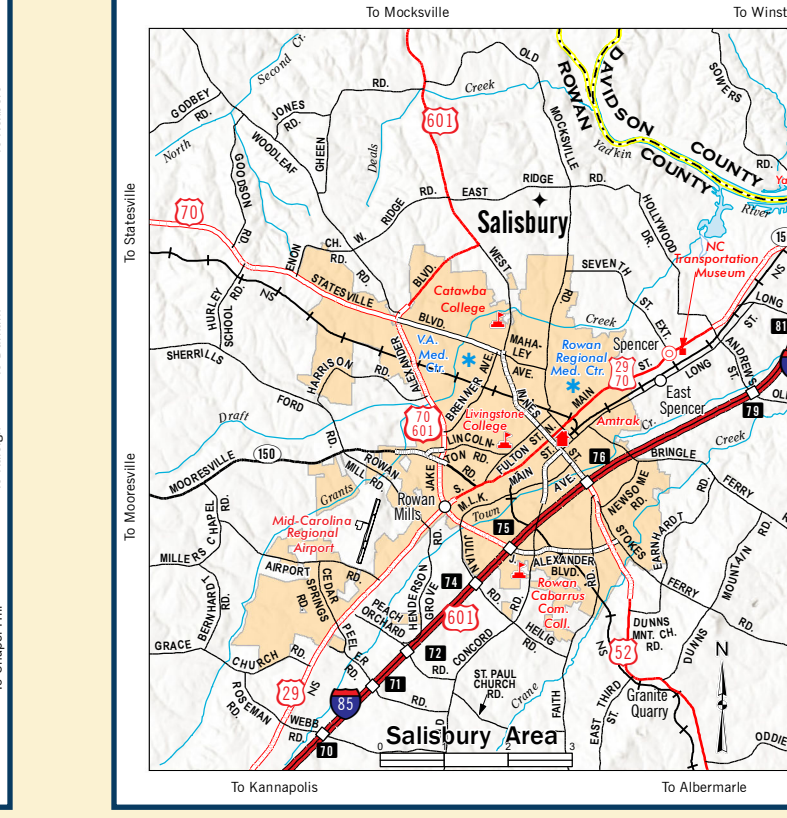
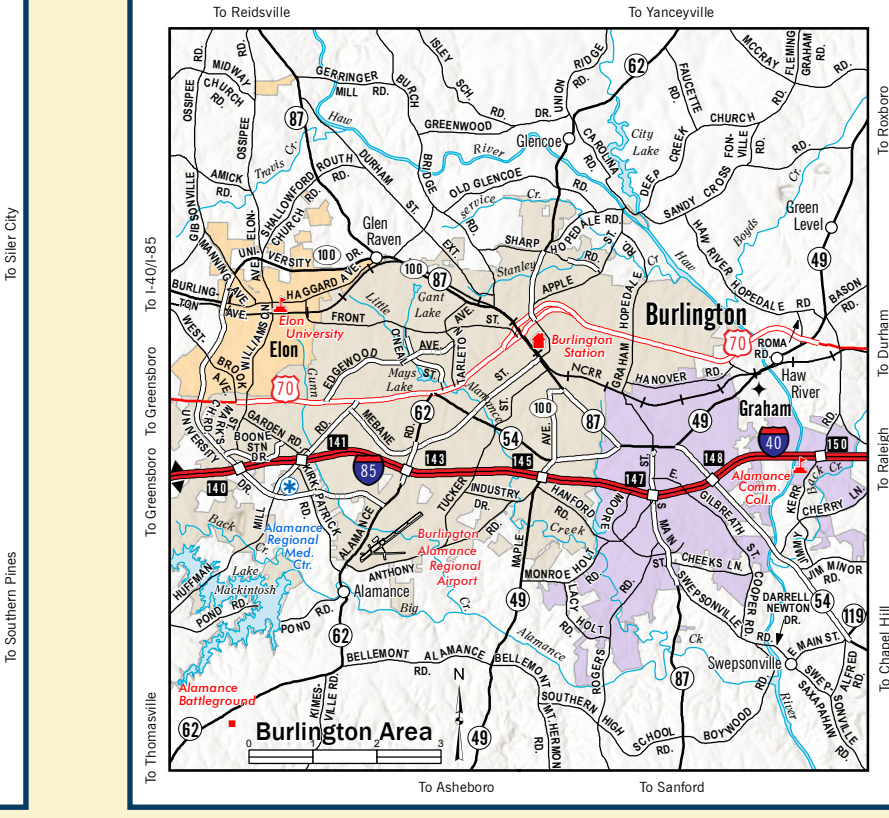
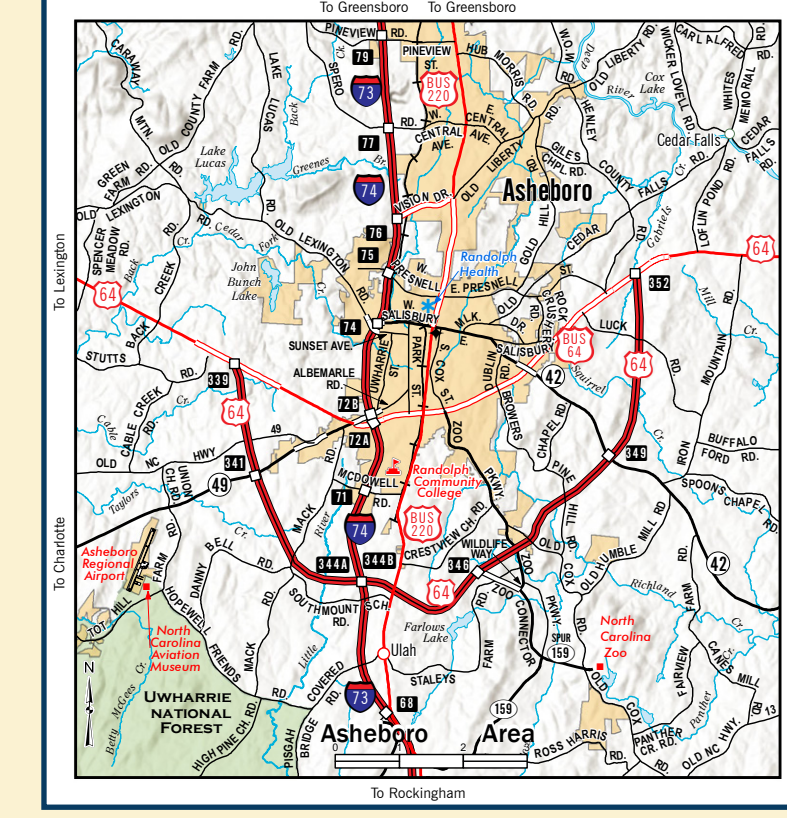


In the counties of Montgomery, Randolph, and Davidson, there are 53,546 acres of Uwharrie National Forest. Enjoy a variety of outdoor pursuits in the forest with your loved ones, including horseback riding, mountain biking, camping, and water sports.

JOLO Winery & Vineyards in Pilot Mountain is a popular place to spend a relaxing weekend with friends for fine wine tastings of your choosing while partaking in other exclusive events.



The Aurora Fossil Museum is a public education resource center with a focus on paleontology located in Aurora. Bring the kids to the fossil park if you're looking for an engaging activity to do together so they can find their very own Miocene-era fossils! To name a few, one might find the remains of extinct sharks, whales, bony fish, and coral in these sandy holes.



Department of Transportation

The N.C. Department of Transportation oversees a robust system of highways, as well as aviation, rail, transit, ferries, and bike and pedestrian facilities that provide important connections to jobs, education, healthcare and recreation.

AVIATION: Aviation is an important part of the state's economy. North Carolina boasts 72 publicly-owned and operated airports and more than 330 privately-owned airports, heliports and other landing areas. More than 57 million passengers fly to and from North Carolina each year. Commercial and general aviation airports generate about \$2.2 billion annually and provide more than 330,000 jobs.

FERRY: The North Carolina Ferry System was established in 1947 with a single route linking the North Carolina mainland with Roanoke Island on the Outer Banks. Today, it is the second largest state-run ferry system in the nation, with 22 boats serving seven year-round routes and a seasonal passenger ferry serving Hatteras and Ocracoke. The ferry system is an extension of the state's highway system and serves visitors and residents as they travel to work, school or unforgettable vacations along the coast.

HIGHWAYS AND BYWAYS: With nearly 81,000 miles of highway, North Carolina has one of the largest state-maintained highway systems in the nation. Along these miles are 61 designated scenic byways that give visitors and residents an alternative to the faster-paced highways and interstates. The Scenic Byways Program provides travelers the opportunity to slow down and see the diverse beauty the Tar Heel State has to offer — from the peaks of the Appalachian Mountains to the fertile hills of the Piedmont, and the marshes and sounds in the Coastal Plain.

Department of Transportation
Welcome
J. ERIC BOYETTE
Secretary of Transportation
CONTACT INFORMATION
The map was prepared by the NCDOT Communications Section. Suggested revision requests should be submitted to the NCDOT Mapping Section, 1903 Mail Service Center, Raleigh, NC 27699-5031. To order maps, call 1-800-VISIT NC (647-4832) or visit visitnc.com/statemap.
Submit general map inquiries to the NCDOT Communications Office, 1903 Mail Service Center, Raleigh, NC 27699-5031. To order maps, call 1-800-VISIT NC (647-4832) or visit visitnc.com/statemap.
ON THE COVER
Family of four at Wesser Field Fire Tower in Franklin, close to Bryson City.
Photo courtesy of VisitNC.com—Sam Davis
Bunker of the Cavallo Hotel at Pinehurst Resort where the 2024 U.S. Open Championship will be held.
Photo courtesy of VisitNC.com—Z Photography
Birds on the beach near Hatteras.
Photo courtesy of VisitNC.com—Blackhorse Studio
STAY SOCIAL ON MEDIA
Facebook: /ncdot
Twitter: @ncdot
Instagram: @ncdotcom
LinkedIn: /ncdot
YouTube: NCDOTCommunications
Photos courtesy of N.C. Department of Transportation unless otherwise noted.

North Carolina

2023-24 OFFICIAL STATE TRANSPORTATION MAP